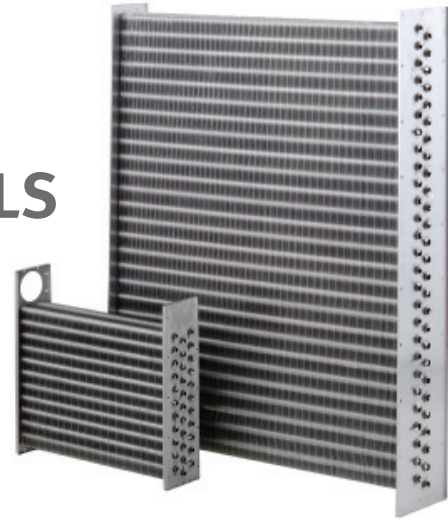


# HEAT RECOVERY COILS

## CONSERVICORE TECHNOLOGY™



Residential or commercial, small or large, meeting your needs.

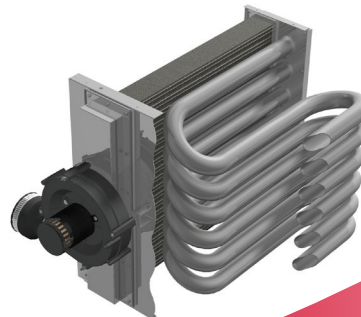
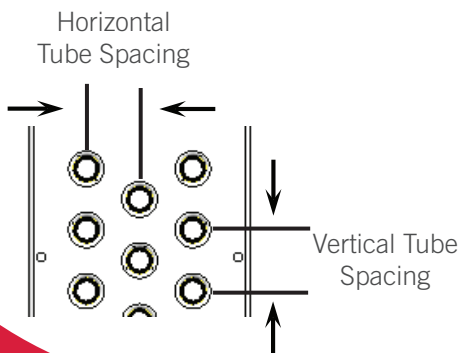
Modine has over 20 years of experience applying our Heat Recovery Coils, HRC, into high efficiency condensing furnace (90+) applications in the residential and commercial market.

Our cores are optimized to meet the specific demands of the challenging performance and corrosive furnace environment using 29-4C super ferritic stainless steel tubes, headers and turbulators. Our application engineers can work with you to optimize your system to meet your cost and performance expectations.

Current capabilities: (see table)

- B and F patterns
- 3/8" and 1/2" tube diameters
- Four (4) fin thicknesses and five (5) fin designs to fine tune performance for your specific application.

Fin Pattern	Tube Spacing (Vert. X Horiz.)	Copper Tube O.D.	Aluminum Fin Styles (Fin Per Inch / Fin Thickness Capabilities)					
			Fin Thickness	Fin Density Range (Fins Per Inch)				
				Flat	Corrugated	SineWave	Highmix®	Turbofin®
B	1.000" X 0.866" Staggered	3/8"	0.0045"	10-23	10-23	10-20	10-23	12-20
			0.0055"	8-23	8-23	10-20	8-23	10-20
			0.0075"	6-23	6-23	8-20	7-23	10-20
			0.0100"	6-18	6-18	N/A	N/A	N/A
F	1.250" X 1.083" Staggered	1/2"	0.0045"	11-20	11-20	12-20	11-20	N/A
			0.0055"	8-20	8-20	10-20	8-20	N/A
			0.0075"	6-20	7-20	8-20	7-20	N/A
			0.0100"	N/A	N/A	N/A	N/A	N/A



Full system knowledge, helping to optimize your system.

For more information please visit [www.modinecoils.com](http://www.modinecoils.com) and let Modine assist you with your current project